

Mailing Address  
P.O Box 3403  
Galveston, Texas 77552

Gallery Hours  
Thursday-Sunday  
12 noon to 6 p.m.

2117A Postoffice Street  
Galveston  
409.621.1008

# The NEWS BRUSH

## Strokes and Dabs

### Message from our President *Margo Donaldson Snider*

#### INSIDE THIS ISSUE

Strokes & Dabs	1
Featured Artist/Web News	2
Programs	3
New Members	4
Building Fund Donors	5
Calendar of Events	6

#### BOARD OF DIRECTORS:

- Margo Snider, President
- Nancy House, VP & Communications Director
- Tracey Bautista, Secretary
- Carey Battle, Treasurer
- Samitha Hess, Volunteer Director
- Roy Clough, Juried Exhibition Director
- Fontaine Jacobs, Web Site Design
- Gabrielle McNeese, *NewsBrush*
- Lee Runion, Member Exhibition Director
- Billie Rinaldi, Program Director
- Charlotte Goeters, Membership Director
- Regina Lee Parkinson, Marketing Director
- Lori Pepper, Social Director
- Al Cusick, Director at Large
- To contact a Board member, please visit the website for contact information.

Please join me in sending condolences to the family of Yvette Nabours. Yvette passed away June 3, 2011 in Garland, TX. She fulfilled a lifelong dream by taking art classes at Galveston College. She joined GAL and was a great supporter of the organization. Her family has set up a memorial fund with GAL in recognition of her love of the arts.

Her daughter, Lynn Beach, M.D. can be reached at 7306 Covewood Dr., Garland, TX 75044.

The upcoming Juried Exhibition will include the 2011 McGivney Award selection. An active GAL member, Dr. Merlin Joseph McGivney (1905-1985) was born in Galveston and was a lifetime resident. Upon his death he bequeathed his collection of books and original paintings to the Rosenberg Library. He established an endowment to fund an annual award at a GAL Juried Show. This award is administered

through the Rosenberg Library. The recipient receives a cash prize and the painting is added to the Rosenberg Library's art collection. There is rotating exhibit of these works; and for the next few months the 1998 recipient, Barbara Kirkpatrick's work, "Portrait of Joel," will be featured at the library.

Please welcome new members of the Board of Directors. Carey Battle has accepted the position of Treasurer. Other new members are Tracey Bautista, Secretary, Regina Parkinson, Marketing, and Cynthia Grant, Development.

Check out the new WEB news, page 2. New requirements for hanging art are covered on page 6.

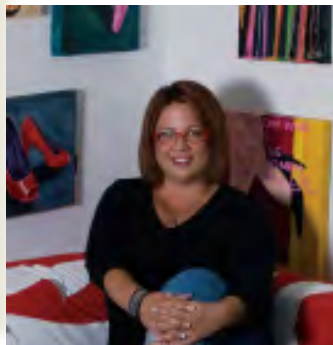
Please remember that changeover is the last Monday of the month. That means that you need to bring in new work to display and pick up your current work. Storing work in



the bin is not a routine option. If under unusual circumstances, you are unable to come to the gallery on Monday, please call me to discuss options. As you know, art left at the gallery becomes the property of GAL.

I look forward to a great Fall Juried Show. See you the last Monday in August!

Margo



*Tracey Bautista, left, is the new Secretary on the GAL Board of Directors. Tracy studied commercial art at the University of Cincinnati. She is a graduate of the Art Institute of Houston with a degree in graphic design. She was the Best of Show winner at the June Juried Show Exhibit at the Galveston Art League.*

#### Note from the Editor

As the new editor of the *NewsBrush*, I welcome any questions, comments or suggestions you may have.

Gabrielle McNeese  
281-328-2483  
Mam\_08@verizon.net



*"My art is influenced by life experiences-I love to fish and many of my subjects are water, boats, even my grandkids faces in the waters reflection."*

## July Featured Artist – Jackie Liddell

The Galveston Art League proudly presents Jackie Liddell as the July Featured Artist.

Jackie's passion for art is obvious as she describes the various mediums she uses including watercolor, acrylic and collage. Transparent watercolor, the use of Japanese Yupo paper and the use of Masa paper, acrylics, and collage; these are only a few of the many interesting techniques practiced by this award winning artist.

"Under Painting" is a style of painting that Jackie has

mastered. The overall subject and concept is planned; however, the initial painting is applied abstractly in a medium to light value.

Her description of these techniques is as animated as the artist herself. Jackie talks about her wonderful family, travels, teaching and of course fishing. She has numerous fishing and boat stories, many of which become subjects in her paintings.

Jackie has a bachelor's degree in Art Education, a Master of Arts degree and a 27 year career as a high school art

teacher. The last 8 years, Jackie continues to teach art at the University of Houston, Clearlake.

She has won many top awards in juried shows throughout her extensive career. Among other art organizations, Jackie has been a GAL member since 2000. She truly enjoys the many artist friendships developed over the years.

Her husband of 43 years, Mark, is her biggest fan. "He keeps my life in order...he thinks with his left side, I with my right!"

***"Creating our new website was fun, but lots of work! I could use the help of anyone who knows Photoshop or another photo editing program. Get volunteer hours without leaving home!"***

***Call me at 832.474.2882 and I will fill you in on the details.***

***Would you like to see something else on the Web? Please give me a call. Or you can always send your comments through our contact page on the Web. Happy Surfing!"***

**Fontaine**

## My Latest Work of Art—the New and Improved Web



Now that the GAL website is live, I recommend you make good use of it. What can you do online? Your artsy friends can join the league, and your rich ones can donate to a great cause--all, online.

Check out the calendar to see member activities, Art Walk dates and more. The Volunteer calendar is now online-use the Web to notify Samitha when you

want to Gallery sit. Read the NewsBrush for the latest news.

Monthly and Juried shows, along with the Featured artist all have online galleries. Through the contact page, you can send your comments and suggestions to Margo.

Don't miss another juried show entry! You can download the prospectus online. You can also download entry cards and forms for the back of your work. All you need is the latest, FREE Acrobat Reader-we have an

online link for that too!

Each GAL member has the opportunity to display their work in our online Members gallery for a fee. Contact Margo through the Web for more information.

You can also help by submitting JPG's of your entries on a CD when you bring your work at change over. Submit a 500-pixel wide, 300 dpi, image cropped to your liking. We will still photograph work without a provided image...Fontaine...

### Attention All Artist's!

Don't forget the annual Fall Juried Show is next month in September. Open to all artist's over the age of 15.

Artist's may enter up to three works in any medium and must be created in the last 2 years. The categories include oil& acrylic on canvas, work on paper (watercolor or acrylic), photography, 2-dimensional mixed media (collage, fiber), 3-dimensional (sculpture, glass, jewelry, etc.) and digital art. This year the Juror will be Diane Brahm, an accomplished artist in oils, pastels, charcoal and mixed media watercolor. The McGivney Award is a \$750.00 prize that will be awarded in the Fall Show. The Fall Show prospectus can be downloaded on the Galveston Art League Website or contact Roy Clough, Exhibition Chairperson at 281-709-1241 day, 281-337-1679 evening or by e-mail.

**Programs**



Shirley Moore Leago



Shirley Moore- Leago, a phenomenal and accomplished painter and instructor, held an oil portrait demonstration and instruction on how to mix skin tones. The June demonstration was a huge success and enjoyed by all who attended. Thank you Shirley!



Peter Bowman, an accomplished photographer, presented a program on four composition techniques. On a recent trip to Vietnam, Peter took lessons from a famous Vietnamese photographer and his class teaching was based on these techniques.

Everyone in attendance really enjoyed the class! Thank you Peter!



**Galveston Art League-How to Paint Birds- Demonstration with John Cotter**

Join the Galveston Art League for an oil painting demonstration of birds by instructor John Cotter. The demonstration will be held on Saturday, August 6, 2011, from 2:00 to 5:00p.m. at the GAL Gallery, 2117A Postoffice Street, Galveston, Texas. The painting demonstration will give you details of how to picture birds of the Gulf Coast in motion and at rest. Bring your notepad and/or sketch book. This demonstration is free and open to GAL members and friends.

For more information contact Billie Rinaldi, Program Director at 409-741-0419 or by e-mail at [bjrinald@yahoo.com](mailto:bjrinald@yahoo.com).

**Galveston Art League-Seminar on the Fine Art Print Making**

The Texas City based printing company, Legacy Fine Art Printers, invites you to join them for a demonstration on the process of Fine Art Printing. The printer will photograph, scan and create a fine art print of the winning painting of the McGivney Award during the September Fall Juried Show for the winning recipient. Please join Jennifer and George Roberts of Legacy Fine Art Printers on Saturday, September 10, 2011, at 10:00 to 12:00p.m. George will also give a demonstration of how to take a digital photograph of your art work, create a JPG and resize it for a specified application, such as the new GAL Website. Please bring your digital cameras.

For more information contact Billie Rinaldi, Program Director at 409-741-0419 or by e-mail at [atbjrinald@yahoo.com](mailto:atbjrinald@yahoo.com).

**An Inside Job**

*In the current issue and future issues of The NewsBrush, I would like to introduce you to a member of the Galveston Art League who serves on the Board of Directors. Recently, there have been several positions on the Board filled. One of the latest positions to be filled is Marketing Director, a position taken by Regina Parkinson. She is a new member of the league and welcomes your ideas and input to further the success of this great organization.*

Regina Lee Parkinson has joined the GAL board as Marketing Director and welcomes your input as she develops a marketing plan.

Though she's new to Galveston Art League, Parkinson is getting her feet wet right away. "It's been fun meeting all the great people here at the league," Parkinson said. "I'm really excited about becoming part of the art community in Galveston."

Parkinson brainstormed with board members at the July meeting, and would like to get ideas from other members as well. She asks that you send your marketing ideas to her at: [reginaleep@comcast.net](mailto:reginaleep@comcast.net).

The artist has a degree in journalism and has worked for the Beaumont Enterprise, the Houston Chronicle, as well as Goodyear Tire and Rubber. She also has a master's degree, and taught college for several years while living in Iowa.

Parkinson lives in Friendswood with her husband John, and their three cats. They have three children as well; a daughter, who lives in Pearland, and twin sons at Texas A & M University. The three kids vacated the nest last year, allowing her to set up a studio and start a new adventure making art.

She enjoys painting the natural world, and also does up cycled pieces using items destined for the landfill. Mixed media work is her favorite because she said she is a "stone-cold paperaholic."

Parkinson has sold her work throughout the Gulf Region, as well as in Dallas, and her native Golden Triangle. She also sells online shipped paintings to places as far away as Australia! When not making art, she's happiest with her toes in the wet sand, the waves at her feet and a pocketful of seashells.

**The Galveston Art League holds workshops, children's exhibitions, membership meetings, three juried exhibitions are held annually and members' art is for viewing and sale continuously.**

**New GAL Members  
Fiscal Year of June 2010 to May 2011**

Mark Anthony Ahola  
Benedict Alok Alva  
Wilma Hart Balleza  
Karen Barr  
Jose Barral  
Tracey Bautista  
Bonnie Blue  
Martha Bly  
Emily Callaghan-Middleton  
Joyce Cash  
Leo Chan  
Jane Chance  
Eva C. Currie  
Brandon Doyle  
Bill Edwards  
Craig Elmore  
Lauran Perry English  
Lenora Farinola  
Gay Fly  
Mary Ann Fore  
Judy Fowler  
Michelle Grindberg  
Joy Hall  
LYT Harris  
Lisa Harrington  
Mary Ann Hasty  
Ray & Connie Heard  
Margo I. Holst  
Carol Ann Hubert  
Young Ae Jeon  
Frances Jones

D.J. Kava  
Roberta King  
Lana & Craig Kress  
Shirley Moore Leago  
Carmen McGee  
Gabrielle McNeese  
Sydney Moen  
Jeff Narron  
Tanya Nuss  
Regina Lee Parkinson  
Lynn Peverill  
Jan E. Potts  
Barbara Rabek  
Jamie Ramsey  
Kimberli Reed  
Terry Reigler  
Gay Sava  
Rena Smith  
Edwin Soriano  
Stela B. Stelly  
Dan & Melanie Strain  
Lynn Thibodeaux  
Janice Tryba  
Joey Villanueva  
Ray Volcik  
Claire Wallace  
Karen Wells-Headles  
Connie Wittstruck  
Liz Wright  
Bonnie Young

**Membership is open to anyone interested in creative, original work in a variety of media, including painting, photography, jewelry making, carving, pastels, quilting, china painting, drawing, and sculpture. Members include students, hobbyists, professional artists, and art lovers.**

**Welcome to all the new Members!**

## Calendar of Events

**GALVESTON ART  
LEAGUE**

2117A Postoffice

Or

P.O. Box 3403

Galveston, Texas

77552

**We're on the Web!**
[www.galvestonartleague.com](http://www.galvestonartleague.com)

Phone

**August 2011 Show**

Deliver art July 25

Pick up art August 29

**ARTWALK-August 27**
**Fall Juried 2011 Show**

Deliver art August 29

Pick up art September 26

**Labor Day Holiday**

Monday, September 5

**October 2011 Show**

Deliver art September 26

Pick up art October 24

**ARTWALK-October 8**
**November 2011 Show**

Deliver art October 31

Pick up art November 28

**ARTWALK-November 26**
**Thanksgiving Day Nov 24**
**December 2011 Show**

Deliver art November 28

Pick up art December 26

**Christmas Day- December 25**
**Changes are coming at the Galveston Art League!!!!!!**

The website ([www.galvestonartleague.com](http://www.galvestonartleague.com)) is up and running thanks to Fontaine Jacobs. Please check it out. We plan to have an online gallery of work in the GAL which will be updated each month after changeover. To expedite this process, we are asking artists – who are able – to bring .jpg images of their work to changeover or to send them to Fontaine. This will give us much better images than we currently have because images on the website today are taken through glass as they hang at the GAL. If you are unable to do this, no problem, we will continue to photograph the show; however, note that colors may be off and there may be reflections in the glass.

- Put the image on a CD or flash/thumb drive and bring it to changeover or email to [Fontaine@fontainefineart.com](mailto:Fontaine@fontainefineart.com)
- Title the IMAGE: artistslastnamefirstinitial\_titleofwork.jpg (i.e., SmithM\_MyArt.jpg)
- Label the CD or flash/thumb drive with the artist's name and phone #. CD's are non-returnable, and thumb drives will be returned to the GAL gallery after the online gallery is complete.
- Images –jpps that are 500 pixels wide and 72 DPI would be ideal, but not required

Also, in July we had 130 works of art in the Member's Show (not counting jewelry). This is a challenge for Lee Runion and his team to hang. Some pieces were very heavy and nearly impossible to hang – not to mention that when they sell, the customer will have problems getting them home. We have decided to equalize – without limiting the size of your submissions. Starting with the October Member Show, works whose circumference exceeds 140 inches will occupy 2 spaces in the gallery. What this means to the artist is that you will be paying for two spaces for any work that exceeds 140 inches in circumference. If two people cannot handle the piece, it will not be hung, even if accepted. This will avoid injury to our team of hangers and provide our customers with art that is transportable.

- Measure the horizontal and vertical size, if these 2 numbers are equal to or less than 70 inches, the art will occupy one space. Said another way, measure the entire circumference of your work, if that number is equal to or less than 140 inches, the art will occupy one space.

Finally, please do not hang the same works for more than 2 consecutive months.