



Mailing address
P.O. Box 3403
Galveston, TX 77552
Gallery Hours
Thursday – Sunday
12 noon – 6 p.m.
2117A Postoffice Street
Galveston

The NEWS BRUSH

Strokes and Dabs Message from our President

Margo Donaldson Snider

INSIDE THIS ISSUE:

Strokes and Dabs	1
Shows	2, 3
Presentation Advice	2
Programs	4
Building Fund Donors	5
Calendar of Events	6

Board of Directors:

Margo Snider, President
Nancy House, VP & Communications
Andi Johnson, Secretary
Roger Bell, Treasurer
Al Cusick, Director at Large
Nancy House, Website
Samitha Hess, Volunteers
Adelyn Cooper, Juried Exhibitions
Lee Runion, Member Exhibition Director
Carey Battle, *NewsBrush*
Lori Pepper, Social
Billie Rinaldi, Programs
Charlotte Goeters, Membership Data
To contact a Board member, please visit the website for contact information.

Please join me in expressing condolences to the family of Norma Claire Frey. She was a lifetime GAL member, making significant contributions to the League and the art community. She will be missed by many.

I am pleased to inform you that Andi Johnson and Lee Runion are new members of the Board of Directors. They join us to replace Sylvia Schneider, Secretary, and Mickey Dotson, Member Exhibition Director. Please join me in thanking Sylvia and Mickey for all the contributions they have made and welcome Andi and Lee.

If you have not yet attended one of the workshops that Billie Rinaldi has organized for you, you need to check the list of upcoming programs. They are not only informative, but lots of fun as well.

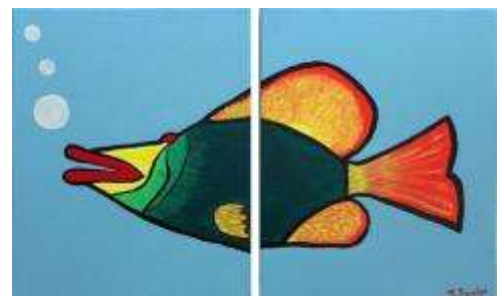
We have made the final payment to Back 40 for the build-out of the gallery. Saying that gives me great pride, but we cannot lose sight of the fact that we still have a need for additional building financial support. Paying for the build-out has taken the reserve that we had built up before Ike. We cannot forget that we still have the mortgage on the gallery and must meet our obligation to keep the building in good repair. One way to contribute is to sponsor one of the benches recently purchased for the gallery. There are 3 benches which were made from reclaimed wood by Marlin's Woodcrafting. For the \$500 sponsorship, an engraved plaque will be attached to the bench. This is

an excellent way to recognize someone who has made a significant impact on your life, to honor a loved one, celebrate the birth of a grandchild, or in remembrance of someone who was dear to you. Of course, the purchase of art from the gallery is another way to help GAL and the artist as well, and as always, straight contributions to the building fund are welcome. Please note the building fund contributions for the current year through August 2010, later in the NewsBrush.

If you have fund raising ideas, let me know. Perhaps you would like to Chair a fundraising committee. Let me hear from you.

Please don't forget that there are many opportunities for you meet new artist friends and gain new information. By participating in ArtWalk, gallery receptions, covering the gallery, and assisting with the tasks of running the gallery, you can do great things. GAL is more than just a place to display your art. **GET INVOLVED!**

Margo



Judy Fowler, LIPSTICK FISH

Galveston Art League Shows

The Art League's Fall Juried Show will be on display in the gallery from September 30 through October 24, 2010. We will be accepting entries on Monday, September 27, the regular changeover date, from 10 a.m. until 5 p.m. Our juror for this show is a renowned Houston artist,

William J. Kalwick, Jr. He has been featured in numerous art magazines and is best known for his portraits and figurative work, particularly Mexican market scenes. You can see his work on his website, www.kalwick.com.

The **Opening Reception** and award presentation will be 6 – 8 pm on

Saturday, October 2. You are strongly encouraged to enter the fall show. If you would like to volunteer to help with the show, please call Adelyn Cooper at 281-334-2056.

"With the new calendar, artists can pick up current works and bring in new work on the last Monday of every month."

Galveston Art League's Art Presentation Guidelines

by **M. Warren Dotson**

The Galveston Art League shows every artist's work to its best advantage. The artist must properly mount art for display, according to our guidelines. If artwork is not properly mounted for hanging, the Galveston Art League will reject the art upon registration, pending re-installation for proper hanging. We do have equipment to "do it yourself" if need be.

OILS, ACRYLICS (on canvas), & WATERCOLORS (This applies to only wooden bases)

Supplies to have when preparing your art for hanging: Scotch tape, and braided wire, strap hangers, screw-eye hooks, framer's points (to hold backing in place), cotton gloves (to handle delicate surfaces), and rubber bumpons (stick-ons to keep the art parallel with the wall if need be).

Start by turning the artwork over on its back with a protective surface below and place a pencil mark at the center top back, one pencil mark on each of the left and right sides, one-third from the top of art. Also, make a pencil mark one-fourth from the top on each side.

Use an awl or an electric drill to begin a hole at the one-third mark, going no further than 1/4" into the back (NOT the sides). Place one strap hook on each side and with a screwdriver and begin to screw the hook into place with the "loop" on top. Strap hooks have either one, two, or three holes for screws, usually, only one screw is

needed per hook, depending on weight of art.

Use braid picture hanging wire and place into one Hook, leaving about 3" loose to wrap around the hanging wire multiple times. On the other side, insert about 5" more wire than you actually need and snip off the excess. Wrap enough of the wire to secure the painting temporarily hanging; but do NOT snip off wire yet or raise the painting high off the floor. Grab the wire in the center and allow the painting to hang freely in your hand slightly above the floor. At your hand level, the wire should be about even with the one-fourth mark. If shorter than that level, loosen the wire and wrap again until you get it to the proper level. This will prevent wall hanging hooks from showing and better balance the artwork on the wall. Tighten the wire on both sides with pliers and snip off the excess. If using screw hooks, place the hook as close to the inside of the frame as possible without weakening the area. It helps to not see the screw hooks when viewing from the front. You can also place the hooks on the inside of the stretcher strips. Be careful not to damage art. The painting is ready for us to hang. If using a metal frame, use adjustable hooks that come with the metal frame and screw in to the back of it. Place the hanging wire the same as above. **WATERCOLORS** and **PHOTOGRAPHY** should always be under glass and **MATTED**

to keep the surface of the image from touching the glass. Attachments on the back are the same as above unless special mechanisms are connected to the back for hanging on a simple picture-hanging hook. There are hanging materials that are **UNACCEPTABLE** for gallery hanging: Saw-tooth hooks; EZ Tach system; frameless picture hangers; string; Z-hangers; copper wire; foam-board hangers; double-sided tape.

In general, oil and acrylic painting do not need to be framed. "Finishing" a painting is quite different from framing. A painting should be able to stand on its own when hung in a gallery. Many collectors hang their collections on the wall "as is," with no framing whatsoever. Remember this is the "in" thing to do nowadays. Many buyers prefer to have the art not framed rather than have to deal with a frame they may or may not like.

3-D OBJECTS: These do not have to be mounted unless you do not want the public to touch the artwork. In such an instance, provide a plexiglass case in which to exhibit your artwork. A small amount of museum putty should be brought by the artist to keep any 3-D piece of art from moving about freely or kept from being knocked over.



* Ridhwan Foundation
publication, *Diamond Dust*

The GAL Board of Directors has chosen **Pia Greenberg to be the Featured Artist** for the month of November. Pia Greenberg is an award winning artist whose photographic art work has been juried into numerous exhibitions over the years, exhibited nationally, published internationally*, and discussed on KUHF's radio show, Front Line. Her work includes both pure photography and digitally altered photography and covers a broad spectrum from the spiritual to the humorous. She has done fundraisers for groups photographing folks in the bluebonnets along with her special "relationship" portraits. Current projects include an exhibit at the Austin Art Space Gallery & Studios and publicity photos for the local band, Psychotic Confessions.



Blue Meanie

Pia's photo, Blue Meanie, has been juried into a show at The Sixth Street Gallery in the Seattle, WA area. In addition, it was published in *Diamond Dust*.

If you are interested in being considered for the Featured Artist, please let Nancy House (nancy.gal@verizon.net or 281-451-5814) know and she will work with you to develop a proposal for consideration by the Board.

What is the Featured Artist? That position entitles the member to exhibit up to eight works of art, which will be displayed in the front of the gallery. In addition, the Featured Artist can hold a reception for friends and family to visit the exhibit. We select members for this honor based on an evaluation of their proposal that cites the artist's credentials and the body of work that they would like to present. Featured Artists may select any show that does not coincide with a juried exhibition. We ask that the artist be available for publicity, photos, and Interviews about the exhibition.



Slick Way to Surf

The Galveston Art League is very excited about rolling out their new **Beta test website**. The site is still a work in progress; however, we invite you to visit the site. You will be able to join and renew your membership by using PayPal with a simple click. In time, we will upload photos of each exhibit, which will remain on the site for six months and be for sale, also using PayPal. Shortly, members will be able to access the members' only sector of the site to access the volunteer calendar and blog. The site is available for most touch screen phone users and to everyone web browsing on the computer. If you are interested in helping maintain the website, please let Nancy House (nancy.gal@verizon.net) know and she will work with you.

Please take a test drive, however, remember we are beta testing the site. Please note that the calendar opens in a new window. If you encounter problems, please let Nancy know.

www.galvestonartleague.com

Galveston Art League Program Events

A variety of monthly workshops at the GAL Gallery has had enthusiastic response from those who have attended. Approximately 60% of those who have signed up for the events have actually come to the workshops. We have had from six to twenty-two participants. Please do come when you sign up for the events so that we can continue to offer this quality of opportunity. So far, all of the programs have been free; however, some upcoming events will have a fee to cover travel, materials, and preparation costs of the presenters.

Each workshop has proven to be a unique program. Two presentations sponsored by Texas Art Supply were terrific interactive demonstrations of products by artists. The first was about the Holbein Duo Water based Oil paints. The second was about Prismacolor colored pencils, markers, sticks, and pens. Participants were given the opportunity to try out the products and were given samples.



Next, we were treated to a demonstration by Vivian Pollock on dying silk and another by Suzanne Peterson on watercolor portraits.

The next event will include another *Paint Together* coaching class by Vivian Pollock, which was very popular in July. The class will be presented on **Saturday, September 11, 2010** Vivian is effective, versatile, and supportive. You may choose your own medium and source materials. This event will cost each participant \$15 for the four hour session from 8:00 am to 12:00 pm at the Gallery. We need a minimum of 10 participants to offer this program.

The October workshop will be presented by Bill Bonham on *How to Prepare Your Work for Show and Sale* on **October 16, 2010**, from 10:00 to 11:30 am at the Gallery. Bill is most sought after as a presenter and will be providing print materials and a demonstration. This program is free to the participants and we must have at least 30 participants signed up as the GAL is funding this program.

Please email Billie Rinaldi, Program Director, at bjrinald@yahoo.com or call her at (409) 741-4019 to sign up for these programs.

Building Fund Contributors

The Galveston Art League offers deep thanks to our members and the public who have generously donated to the building fund.

Paying for the build-out has taken the reserve that we had built up before Ike. We cannot forget that we still have the mortgage on the gallery and must meet our obligation to keep the building in good repair.

You can donate online at www.galvestonartleague.com or by contacting Margo Snider mdsnider_houston1@comcast.net

You can donate in honor or in memory of another person or institution and we will include this information in the *NewsBrush*.

Building Fund contributions for this Fiscal year (June 2010-August 2010)

are:
 Rex and Gayle Reynolds
 Al Cusick
 Lori Pepper
 Larry & Cindy Williams
 Michael Slattery
 Don Henderson
 Art Smith
 Nancy House
 Leonard Sims
 Kenny Keyes

We're looking for a few good artists:

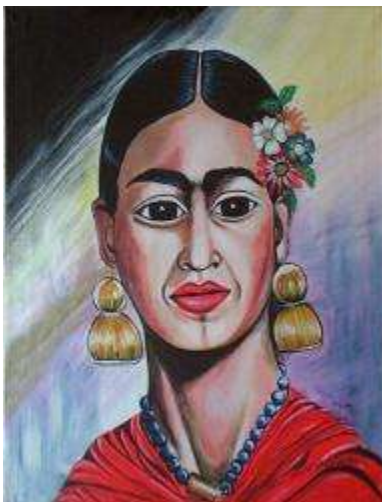
Become a volunteer at the Galveston Art League, the benefits are enormous! And include hanging at the regular price of \$10 for the first 2 works and \$5 for the third.

At every event, there are networking opportunities. In addition to Gallery sitting, you can work on the web, hang shows, help to register art during change-over, work on our membership committee, paint/spackle the walls, and help at ArtWalks.

Contact Samitha Hess – 409.457-8198. **We need YOU**



Images from the July Member Show



Bonnie Blue,
FRIDA

Gerald Slyer,
GREAT KISKADEE #2



Nancy Schrock,
FLOWERS AND PEAR

GAAL Calendar

GALVESTON ART LEAGUE

2117A Postoffice

Or

P.O. Box 3403

Galveston, TX 77552

Phone:

409.621.1008

We're on the Web!

See us at:

**www.galvestonart
league.com**

September 2010 Show

Pick up art September 27

Fall Juried 2010 Show

Deliver art September 27

Pick up art October 25

ARTWALK – October 9

November 2010 Show

Deliver art October 25

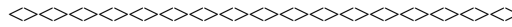
Pick up art November 29

ARTWALK – November 27

2010 Holiday Art Market (December)

Deliver art November 29

Pick up art December 27



SUPPORTED BY HOTEL/
MOTEL TAX DOLLARS



Non-profit Org.
Us Postage
PAID
Galveston, Texas
Permit No. 94

the
Galveston
Art League
P.O. Box 3403
Galveston, Texas
77552